

The Museum at Your Pace

Social Story

GLUCKSMAN

Contents.

• The museum _____	3	• What will we be doing? _____	20
• How do I get into the building? _____	4	• Is there information about the exhibitions? _____	23
• How do I get to the galleries? _____	6	• Who can I ask for help during my visit? _____	26
• What do the galleries look like? _____	11	• Sensory Kits _____	28
• What will I do when I get to the gallery? _____	13	• Where can I sit down ? _____	29
• Who will be there? _____	15	• Where is the toilet in the gallery? _____	31
• Who can accompany me? _____	19	• After the visit. _____	33

The museum.



The Glucksman is an art museum located on the main campus of University College Cork.

The museum showcases artwork by Irish and international artists.

It has three floors of gallery spaces, a gallery shop, a café, and a dedicated workshop space.

How do I get into the building?



This is the front door of the museum.

How do I get into the building?



The door is a little heavy, but it is power-assisted. You can press this button and the door will open for you.

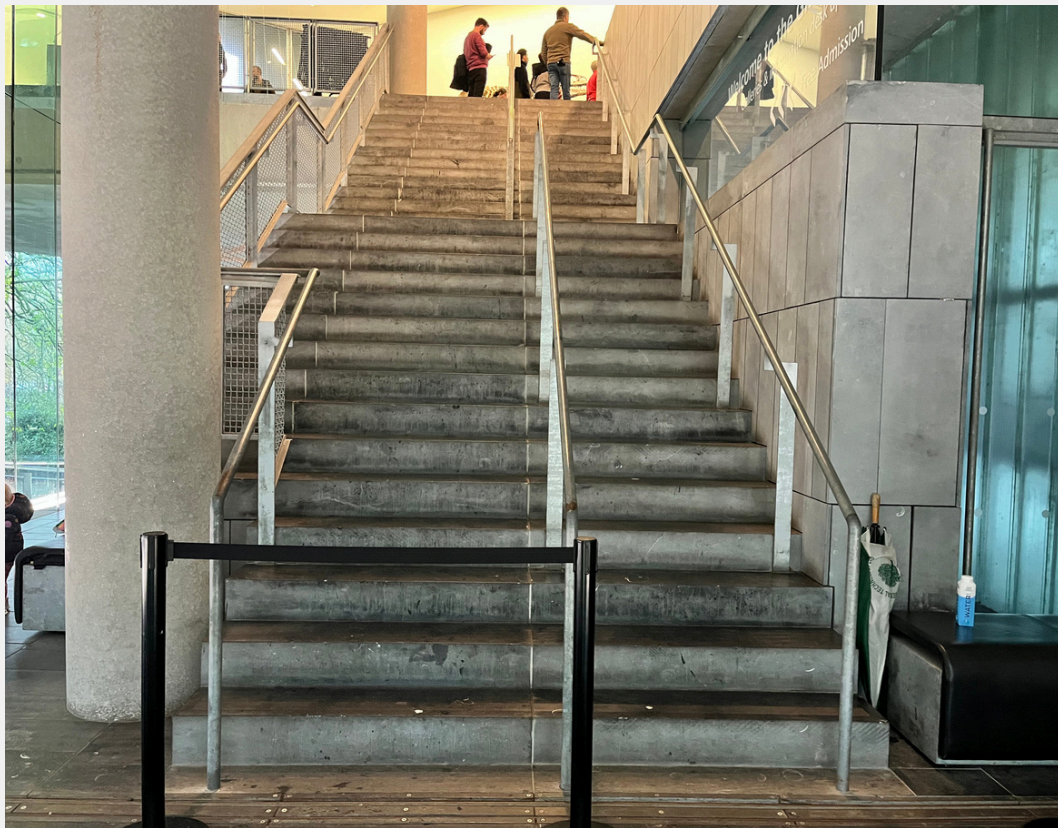
How do I get to the galleries?



When you come through the front door, this is what you will see.

If you arrive a little early, you can sit on the benches in the foyer space. We will come down to open the barrier at 9.55am.

How do I get to the galleries?



You can walk up these stairs to reach the gallery. There are 30 steps in total, with handrails on both sides and in the middle of the stairs for support.

How do I get to the galleries?



You can also use the lift to get to the gallery.
This is what the lift looks like when the doors are closed.

How do I get to the galleries?



This is what it looks like when the doors are open.

How do I get to the galleries?



The lift can be noisy and moves slowly.
You can press button 2 in the lift to go to the exhibition.

What do the galleries look like?



In Gallery 1, there are overhead LED lights and lots of natural light coming in through the large windows.

If it is a sunny or bright day, the gallery may feel very bright. If it is too bright, we can dim the lights.

The galleries are safe and welcoming spaces where everyone can enjoy the exhibitions at their own pace.

What do the galleries look like?



Gallery 2 (Level 4) has similar floors, walls, and windows to Gallery 1.

The exhibition and artworks in this space are different. A member of staff will greet you when you arrive on this level.

What will I do when I get to the gallery?



It is important to remember the house rules when visiting the galleries:

- We do not eat or drink in the galleries.
- We do not run in the galleries.
- We do not touch the artwork.

What will I do when I get to the gallery?



If you have a coat or a bag, you can store it in one of these lockers. The lockers require a €1 coin. If you do not have a coin, you can borrow one from the Information Desk in the shop.

Who will be there?

The Glucksman team will be there if you have questions or need any help.
They are excited to meet you!

Meadhbh (She/Her)



Meadhbh is a curator in the Glucksman art museum. She loves spending time with her friends and going swimming both in the sea and the pool.

Tadhg (He/Him)



Tadhg is a curator at the Glucksman art museum. Tadhg loves spending time with his 4 small children, watching his favourite soccer team – Liverpool, and running marathons!

Julie (She/They)



Julie is a curatorial assistant at the Glucksman art museum. She likes spending time with her friends and her band - she plays the drums in a punk band!

Who will be there?

Fiona (She/Her)



Fiona Kearney is the Director of the Glucksman art museum. She writes about art, loves playing scrabble and is an avid tennis player.

Cathy (She/Her)



Cathy is the retail and events manager at the Glucksman art museum. She loves walking in the woodlands local to her and cooking up a storm in the kitchen at the weekends!

Who will be there?

Damian (He / Him)



Damian is the administrator at the Glucksman. He likes to make sure that all the t's are crossed and the l's are dotted! He is an early morning person and never starts the day without coffee.

Katie (She/Her)



Katie O'Grady is a curator at the Glucksman art museum. She loves reading and snuggling up with her black cat Serge!

Who will be there?



You may see other visitors in the museum.
Some visitors may come alone and others may come in groups.

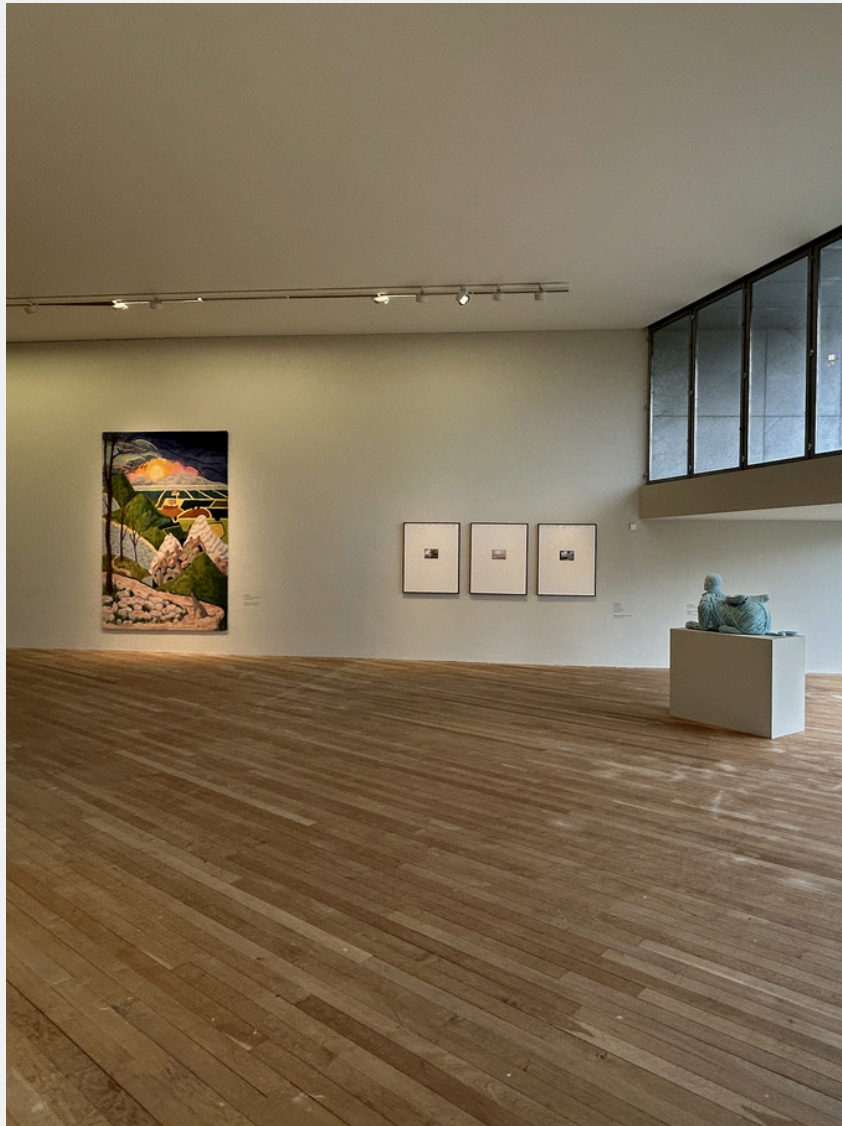
Who can accompany me?



We want to make sure you feel happy and comfortable in our spaces, so please bring family or friends with you when you visit.

Parents or guardians must stay in the gallery with children during the quiet hour.

What will we be doing?



You can walk around the galleries and look at all of the artwork on display.

Some people spend a long time looking at one artwork. You can move at your own pace.

Artworks may be large, colourful, loud or unusual.

What will we be doing?



It is okay to take your time.

Everyone experiences exhibitions differently.

You can leave a space and come back later.

What will we be doing?



You can talk to the other visitors, parents, or guardians. People talk quietly in museums, but you do not need to whisper.

There will be benches where you can sit down and take a break if you need to.

There is also an area on Level 4 where you can relax and do some creative activities.

Is there information about the exhibitions?



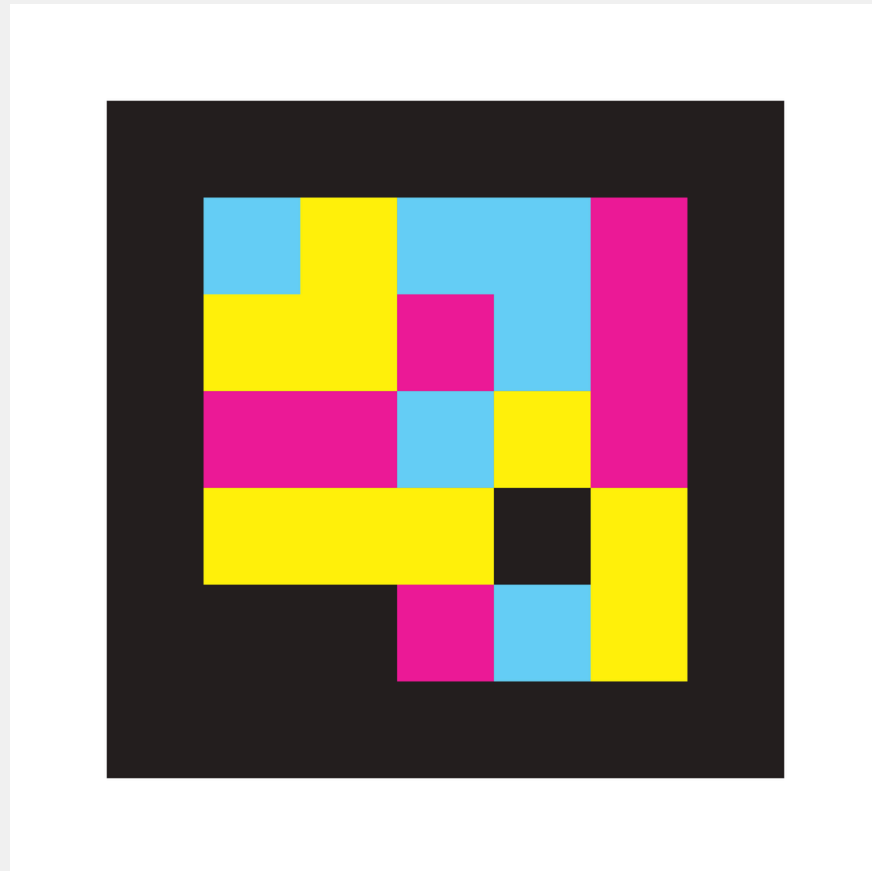
There are labels and wall texts with information about the exhibitions. You can read as much or as little as you would like.

Is there information about the exhibitions?



We also have large print texts about the exhibition which you can borrow and read while you explore the galleries. These are located beside our sensory kits next to the museum shop.

Is there information about the exhibitions?



You will see these stickers throughout the museum. These are Navilens codes that provide audio assistance to visitors.

Some stickers give directions on getting around the building and others provide descriptions of exhibitions and artworks.

You can use the codes by downloading the Navilens app and scanning with a phone.

Who can I ask for help during my visit?



If you have any questions or concerns during your visit, you can speak to a member of staff at Information Desk on Level 2.

The Glucksman team is here to help and to help sure you have an enjoyable experience.

Who can I ask for help during my visit?



Our friendly Visitor Experience staff will also be walking around the gallery from 11am onwards. You can approach them for help or with questions you may have. They will be wearing black jumpers with 'GLUCKSMAN' written in orange lettering.

If you have any questions or concerns before your visit, please email education@glucksman.org or info@glucksman.org

Sensory kits.



There will be some sensory kits in the gallery spaces if you would like to use them.

The sensory kits include ear defenders, ear plugs, magnifying glasses, sunglasses, and fidget toys.

When you have finished using the items, please place them back into the tote bags and return them.

You are also welcome to bring your own sensory items with you.

Where can I sit down during my visit?



There will be a long bench in the gallery space where you can sit down and relax while looking at the artwork.

We will have feedback cards and pencils available there for drawing and writing.

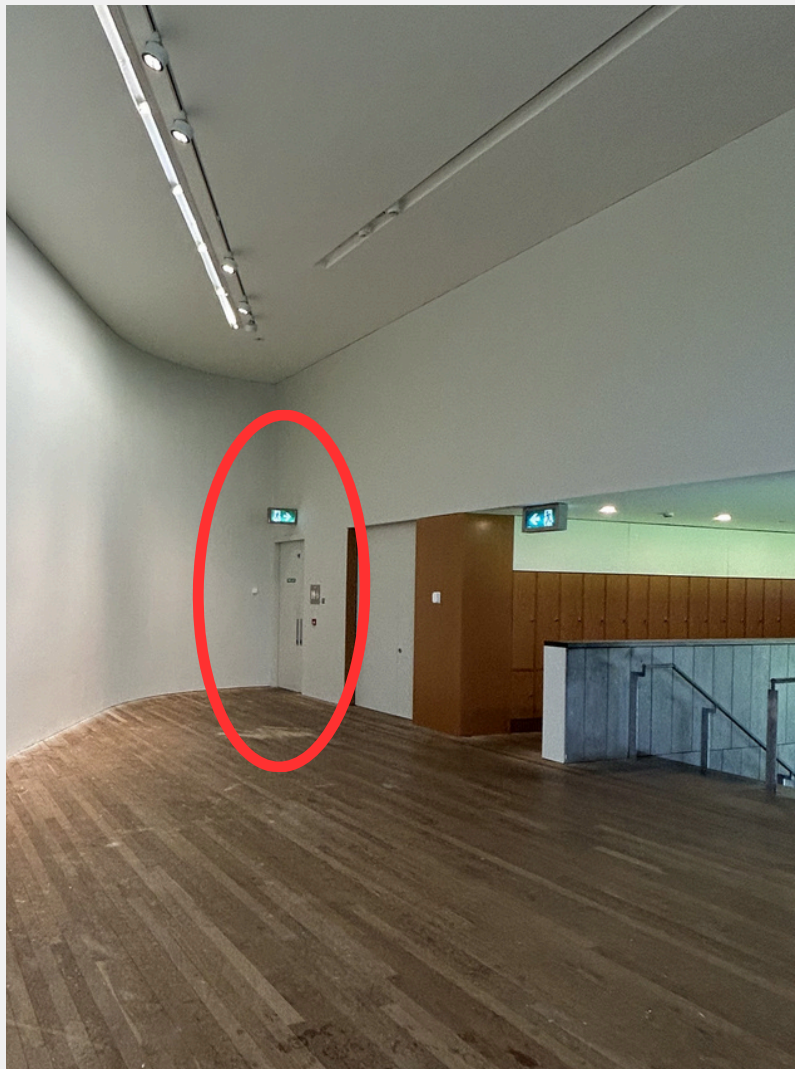
Where can I sit down during my visit?



There are also fold-out chairs that you can borrow if you would like to sit closer to the artwork.

These chairs are stacked on a rack like this. You can take a chair from the rack and unfold it to sit down in the exhibition space.

Where is the toilet in the gallery?



To the right of the top of the stairs, there is a door marked 'Fire Exit'. If you walk through this door, you will see two toilets on the right-hand side.

Where is the toilet in the gallery?



Each toilet also has a sink, hand dryer, and sanitary bin. One toilet is wheelchair accessible and includes an emergency cord and a grab rail.

After the visit.



After your visit, you can also visit the cafe, called Léa's, which is located on Level 0.

The cafe can sometimes be noisy, especially when it is busy on weekends.

We are looking forward to seeing you.



If you need any help finding the gallery, you can contact our friendly team at 021 490 1844 or by email at info@glucksman.org